



# TOYOTA LANDCRUISER 300 SERIES '22-23

## PERFORMANCE LOWER ARM KIT

### PART# CAM-310174

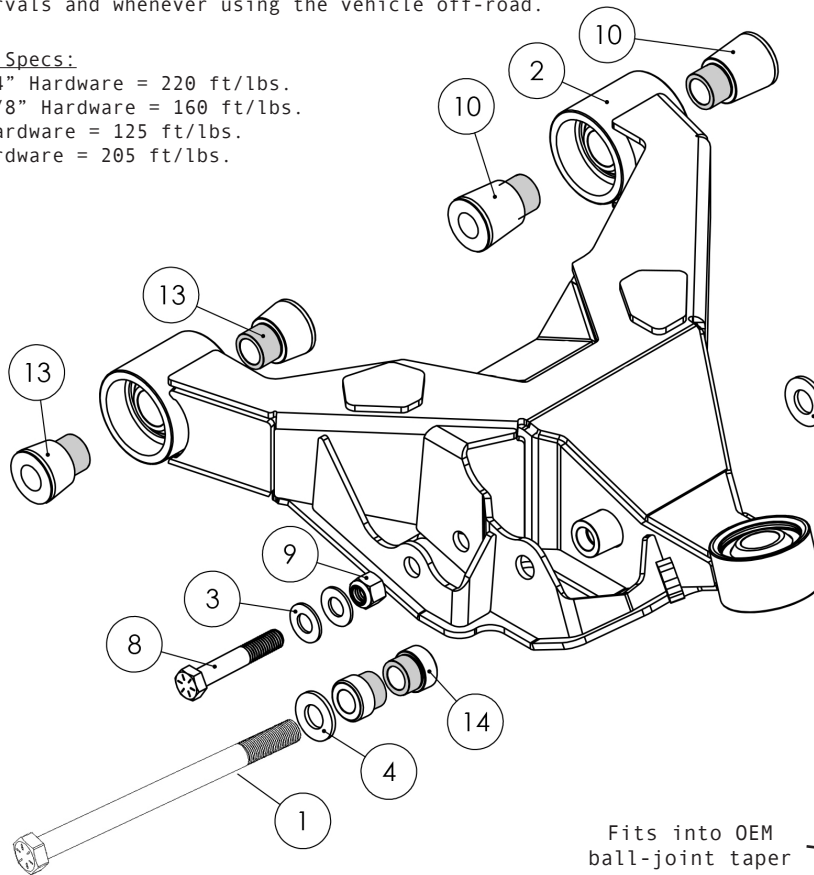
Thanks for purchasing our performance lower arms. If you are not installing these yourself have a qualified shop do so. These arms are designed to be used with stock OEM spindles or Camburg performance spindles. Check the parts list to make sure you have every component prior to installing. Camburg Engineering has made every attempt to insure you receive the highest quality components in the most complete manner. This is a guide to help you through the process with some recommended torque specs & notes. It's your responsibility to ensure parts are being installed correctly using the correct tools and procedures. For step-by-step instructions refer to a Toyota Service manual.

#### Important Notes:

- Designed specifically for King coilovers
- Maximum Wheel Backspacing = 6"
- Use supplied spacers and 5/8" hardware in lower shock mount.
- Use RED loctite on all fasteners > 1/4" dia.
- Use BLUE loctite on all fasteners < 1/4" dia.
- Apply anti-seize to uniball spacer surfaces shaded gray.
- Inspect and re-torque all hardware and components after the first 500 miles, inspect at your scheduled maintenance intervals and whenever using the vehicle off-road.

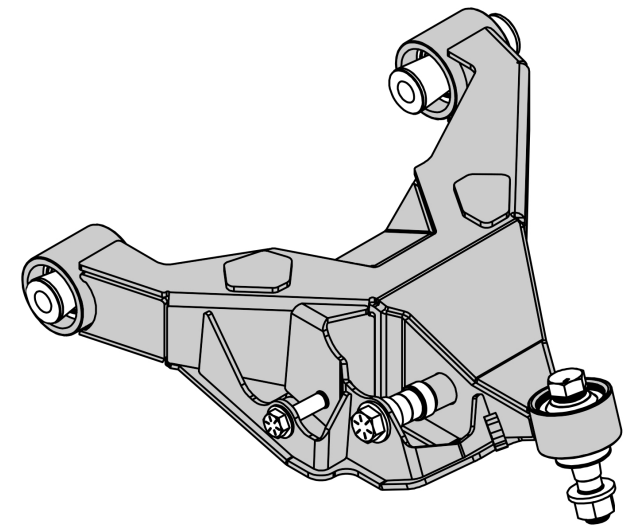
#### Recommended Torque Specs:

- Lower Uniball 3/4" Hardware = 220 ft/lbs.
- Lower Coilover 5/8" Hardware = 160 ft/lbs.
- Lower Sway-bar Hardware = 125 ft/lbs.
- Alignment Cam Hardware = 205 ft/lbs.



[DRIVER-SIDE ARM SHOWN]

ID	PART NBR	DESCRIPTION	QTY
		DRIVER SIDE LOWER ARM	1
		PASSENGER SIDE LOWER ARM	1
7	950188	3/4-16 X 3.313" GRIP HEX AIRCRAFT BOLT	2
12	960462	1.00 X 3/4" UPPER UNIBALL SPACER	2
11	960461	1.00 X 3/4" LOWER TAPERED UNIBALL SPACER	2
5	950017	3/4" SAE GRADE 8 ROUND WASHER	2
6	950035	3/4-16 CAD STOVER LOCK NUT	2
13	960506	FRONT UNIBALL FRAME PIVOT SPACER (SHORT)	4
10	960053	REAR UNIBALL FRAME PIVOT SPACER (LONG)	4
1	950210	5/8-18 X 8.5" GRADE 8 HEX BOLT	2
4	950016	5/8" SAE GRADE 8 ROUND WASHER	4
17	950269	5/8-18 GRADE 8 NYLOC NUT	2
14	960605	LC300 KING LOWER SHOCK SPACER	4
8	950216	9/16-18 X 3" GRADE 8 HEX BOLT	2
3	950015	9/16" SAE GRADE 8 ROUND WASHER	4
9	950215	9/16-18 GRADE 8 NYLOC NUT	2
	030017	CAMBURG 8.5" STICKERS	4



Torque 3/4" nut to 220 ft/lbs w/ red loctite

[02.21.24]

Due to the extreme and punishing nature of off-road use, Camburg Engineering products have no implied or expressed warranty. Camburg Engineering products and components are designed and manufactured for off-road use only. Always inspect your suspension after off-roading and at your routine service intervals. Use of products sold by Camburg Engineering is at the consumer's own risk. Proper installation and proper use of all products must be followed for optimal safety and performance. Camburg Engineering does not accept responsibility for improper use, alterations, lack of maintenance/inspection and installation of any products. Installing most suspension products will raise the center of gravity of the vehicle and can increase the susceptibility to a rollover and alter the handling characteristics. Camburg Engineering products may void the vehicles warranty, check with your local dealer. The loss of use of the product, loss of time, inconvenience, removal, shipping costs, commercial loss or consequential damages are not covered. Camburg Engineering reserves the right to change the design, material or specifications of any product without assuming any obligation to modify any product previously manufactured and without prior notice. Every effort has been made to avoid printing errors and specifications. By purchasing, installing and/or using these products you are accepting these stated conditions and accept all liability and responsibility.